

LOAD-IN

1. Vital Theatre Company will arrive at least 2 hours before performance time.
2. A venue staff-person with technical knowledge of the space must meet the company when they arrive and be available before, during, and after the production to address any technical issues.
3. We travel in one 15-passenger van and one set van and will need access to the loading dock or “stage door” to unload equipment.
4. The set includes flats that are 7’-7” tall by 4’-8” wide and a table that is 2’-6” square. Appropriate door widths are required to get the set to the stage.
5. Parking is required for our vans for the duration of the performance.

SET UP

1. The onstage playing area must be at least 18’ deep x 20’ across, with room for offstage storage of set pieces; ideal dimensions are 18’ deep by 30’ across with upstage crossover. Overhead clearances should be at least 8’ to 14’ for soft goods.
2. The production travels with one 14’ x 20’-5” backdrop and two 6’ x 14’ legs (see floor plan for placement). Soft goods can be hung from existing theater pipes or from Vitals’ pipe and base setup.
3. See included documentation for floor-plan and hard set pieces.

SOUND

1. Vital Theatre Company travels with its own wireless headset microphones. This includes 6 – Shure PGX4 Receivers, PGX1 Bodypack Transmitters and WH20 Dynamic Headset microphones.
2. Venue shall provide 20 AA batteries, 2 for each of the wireless transmitters, for each performance.
3. We will require a sound system with a mixing board of at least 7 open channels CD player and amplification through two speakers.
4. Venue must provide at least one center stage monitor.
5. We require a sound technician who is familiar with the venues equipment to assist in set-up and sound check.
6. Sound position outside of booth, preferably on tech tables.
7. SR & SL monitor without vocals. CD channel only. Auxillary out with cd player no vocals.

LIGHTS

1. Lights should be hung, cabled, circuited, and gels provided according to the lighting documentation (see below) prior to Vital crew arrival, or with adequate time to focus and prep before the performance.
2. We provide a cue disk for etc. light boards. Otherwise time for programming the show must be included

For Smaller Venues

1. The production uses a full wash on the playing area and can be run with lights up and lights down. A warm and cool wash with suitable side and front light are preferable.
2. We prefer not to use fluorescent lighting on stage.
3. House lights should be lowered during the performance.
4. If the Stage Manager's position and the Light Board Operator's position are not in the same location, a means of communication between the two would be required.

ACTOR FACILITIES

The company will require separate male and female dressing rooms with mirrors and electrical outlets able to accommodate 3 female and 2 male performers.

Venue will provide each company member a bottle of water for each performance, 7 total members of tour company.

Venue will provide a secure location, if dressing rooms are not themselves secure, for the company to keep their personal belongings.

Venue will have emergency first aid kit on site.

POST SHOW/STRIKE/LOAD OUT

If venue staff is available sound and costume strike can begin immediately following the performance. If the post-show workshop is taking place on the stage the set can be struck immediately following the workshop.

After booking the performance a Vital Theatre Company staff member will get in touch with you to go over availability of specific technical elements at the venue and the needs of the specific production.

Any tech questions can be addressed to office@vitaltheatre.org or by calling 212.579.0528.

BILLING

Where Artist is headlining, Artist shall receive 100% sole star billing in all advertising and publicity, including, but not limited to air time, newspaper and trade ads, flyers, posters, billboards, marquees, etc. Artist shall have the right of approval of all press and publicity in regard to this engagement.

FORCE MAJEURE

Artist's obligation to furnish the entertainment unit referred to herein is subject to the detention or prevention by sickness, inability to perform, accident, means of transportation, act of God, riots, strikes, labor difficulties, epidemics and any act or order of any public authority or any cause, similar or dissimilar, beyond Artist's control.

Provided Artist is ready, willing and able to perform, Purchaser agrees to compensate Artist in accordance with the terms hereof regardless of act of God, fire, accident, riot, strike or any event or events of any kind or character whatsoever, whether similar or dissimilar to the foregoing events which would prevent or interfere with the presentation of the show hereunder.

INCLEMENT WEATHER

Notwithstanding anything contained herein, inclement weather shall not be deemed to be a force majeure occurrence, and the Purchaser shall remain liable for payment of the full contract price even if the performance(s) called for herein are prevented by such weather conditions.

Artist shall have the sole right to determine in good faith whether any such weather conditions shall render the performance(s) impossible, hazardous or unsafe.

The specific capacity, gross potential, and ticket price breakdown of the facility where Artist is to perform under this agreement must be clearly printed on the face of the contract that this agreement is attached to.

If Purchaser charges more than the agreed upon ticket price stated on the face of this contract, or admits more patrons into room than agreed upon capacity the Artist will receive 100% of the difference between the contract price and amount of actual ticket charge and/or Artist will receive 100% of the difference the contracted capacity and the actual amount of guests admitted.

No part, portion or segment of Artist's performance is to be reproduced, either through audio or visual means, without the express written permission of the Artist.

Artist to receive up to twenty (20) complimentary tickets if requested. No complimentary tickets to be issued by the buyer without prior written permission from Artist's management.

**ABSOLUTELY NO ADVERTISING UNTIL FULL 50% DEPOSIT IS PAID,
WITHOUT PRIOR WRITTEN APPROVAL FROM ARTIST'S MANAGEMENT.**

Purchaser must start advertising of this engagement no less than thirty (30) days prior to play date.

This rider together with the contract attached constitutes the entire agreement between the parties and shall not be amended, altered, canceled, or in any way changed except with written consent of Artist. The Purchaser is apprised and fully understands that all provisions of this agreement and compliance with all the requirements set for herein are essential to the proper performance of Artist and that Artist shall have no obligations to perform and will not perform in the event all terms and conditions of this agreement are not adhered to. It is further understood that if Artist is ready to perform and does not because of Purchaser's breach, Artist shall be entitled to the full amount which would have been payable in the event of performance.

The provisions of this rider are supplementary to the basic contract and where there shall be a conflicting provision, the provisions of this rider shall prevail.

Purchaser

Artist

The following documents are available in full size at:

www.pinkaliciousthemusical.com/tour/presenter

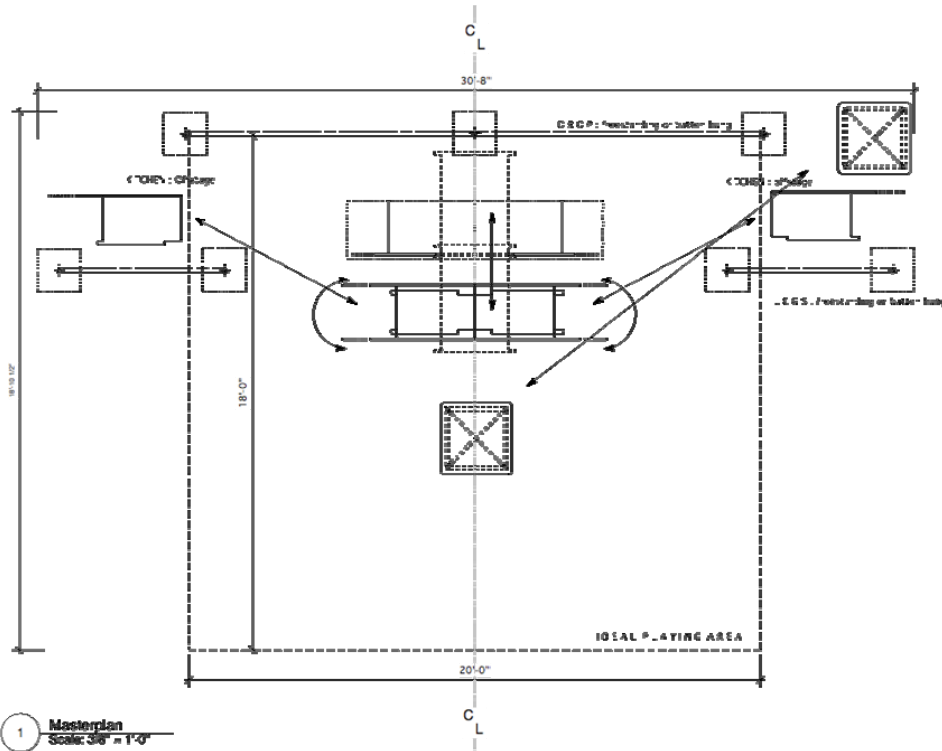
Username: presenter

Password: pinkatastic

INPUT LIST/CHANNEL ASSIGNMENT

<u>Channel Number</u>	<u>Microphone</u>	<u>Input</u>
1. Actor 1	Shure PGX4 Receiver*	XLR
2. Actor 2	Shure PGX4 Receiver*	XLR
3. Actor 3	Shure PGX4 Receiver*	XLR
4. Actor 4	Shure PGX4 Receiver*	XLR
5. Actor 5	Shure PGX4 Receiver*	XLR
6. SPARE	Shure PGX4 Receiver*	XLR
7. CD INPUT		

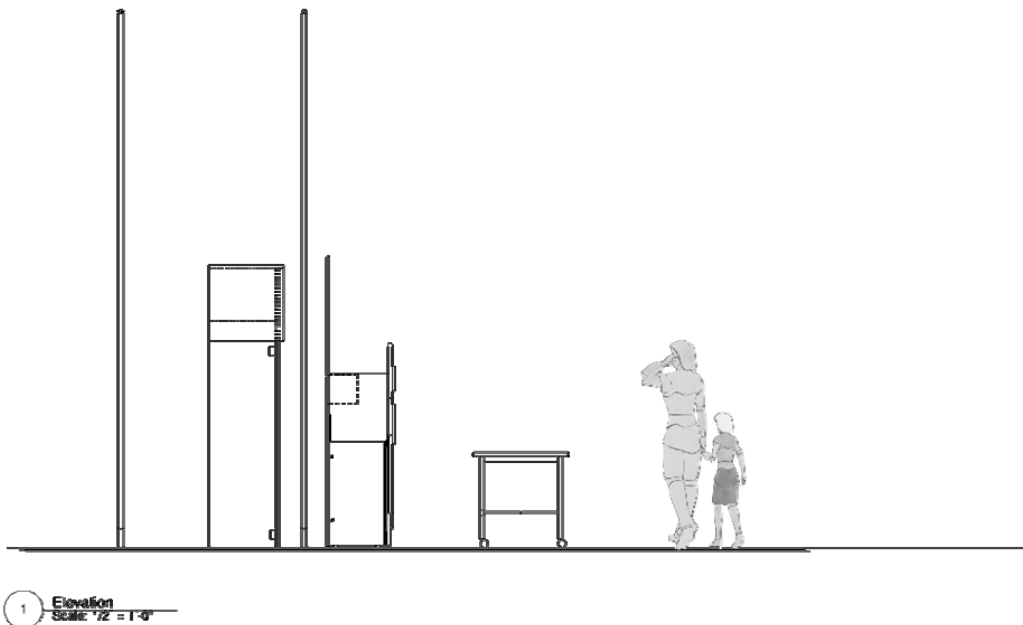
*Each Receiver requires a 110v power source.



Pinkalicious
 Plot: 10' x 10' - 10' x 10' - 10' x 10' - 10' x 10'
 Plot: 10' x 10' - 10' x 10' - 10' x 10' - 10' x 10'

10'-0"

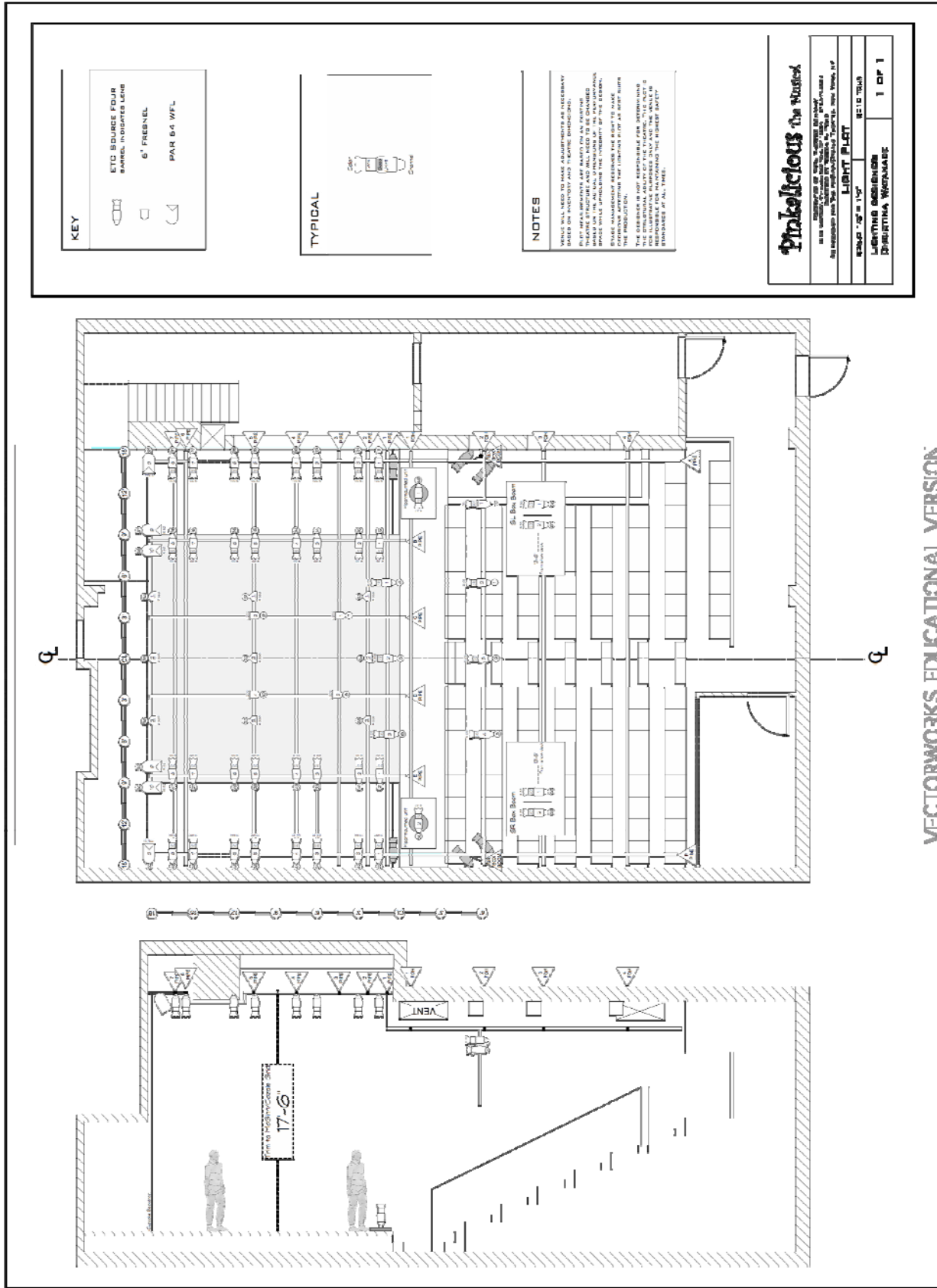
2 of 10



Pinkalicious
 Plot: 10' x 10' - 10' x 10' - 10' x 10' - 10' x 10'
 Plot: 10' x 10' - 10' x 10' - 10' x 10' - 10' x 10'

10'-0"

3 of 10



VECTORWORKS EDUCATIONAL VERSION

Pink Tour.lw5

CHANNEL HOOKUP

Pink Tour.lw5

3/26/10

Chan	Dm	Position	U#	Purpose	Type & Acc & W	Color	Gobo
(1)		FOH 2	2	Front light	Source 4 36deg 575w	R 05	
(2)		FOH 2	3	Front light	Source 4 36deg 575w	R 05	
(3)		FOH 2	4	Front light	Source 4 36deg 575w	R 05	
(4)		1 Elec	1	Front light	Source 4 36deg 575w	R 05	
(5)		1 Elec	2	Front light	Source 4 36deg 575w	R 05	
(6)		1 Elec	3	Front light	Source 4 36deg 575w	R 05	
(7)		3 Elec	1	Top light	6" Fres 750w	L 202	
(8)		3 Elec	2	Top light	6" Fres 750w	L 202	
(9)		5 Elec	2	Top light	6" Fres 750w	L 202	
(10)		5 Elec	4	Top light	6" Fres 750w	L 202	
(11)		A Pipe	1	← Warm	Source 4 36deg 575w	R 99	
(12)		B Pipe	1	← Warm	Source 4 36deg 575w	R 99	
(13)		A Pipe	3	← Warm	Source 4 36deg 575w	R 99	
(14)		B Pipe	3	← Warm	Source 4 36deg 575w	R 99	
(15)		A Pipe	5	← Warm	Source 4 36deg 575w	R 99	
(16)		B Pipe	5	← Warm	Source 4 36deg 575w	R 99	
(17)		A Pipe	7	← Warm	Source 4 36deg 575w	R 99	
(18)		B Pipe	7	← Warm	Source 4 36deg 575w	R 99	
(21)		E Pipe	1	→ Warm	Source 4 36deg 575w	R 99	
(22)		F Pipe	1	→ Warm	Source 4 36deg 575w	R 99	
(23)		E Pipe	3	→ Warm	Source 4 36deg 575w	R 99	
(24)		F Pipe	3	→ Warm	Source 4 36deg 575w	R 99	
(25)		E Pipe	5	→ Warm	Source 4 36deg 575w	R 99	
(26)		F Pipe	5	→ Warm	Source 4 36deg 575w	R 99	
(27)		E Pipe	7	→ Warm	Source 4 36deg 575w	R 99	
(28)		F Pipe	7	→ Warm	Source 4 36deg 575w	R 99	
(31)		A Pipe	2	← Cool	Source 4 36deg 575w	R 55	
(32)		B Pipe	2	← Cool	Source 4 36deg 575w	R 55	
(33)		A Pipe	4	← Cool	Source 4 36deg 575w	R 55	

Christina Watanabe / Lightwright 5

(1) thru (33)

Pink Tour.lw5

CHANNEL HOOKUP

Page 2 of 3

Pink Tour.lw5

3/26/10

Chan	Dm	Position	U#	Purpose	Type & Acc & W	Color	Gobo
(34)		B Pipe	4	← Cool	Source 4 36deg 575w	R 55	
(35)		A Pipe	6	← Cool	Source 4 36deg 575w	R 55	
(36)		B Pipe	6	← Cool	Source 4 36deg 575w	R 55	
(37)		A Pipe	8	← Cool	Source 4 36deg 575w	R 55	
(38)		B Pipe	8	← Cool	Source 4 36deg 575w	R 55	
(41)		E Pipe	2	→ Cool	Source 4 36deg 575w	R 55	
(42)		F Pipe	2	→ Cool	Source 4 36deg 575w	R 55	
(43)		E Pipe	4	→ Cool	Source 4 36deg 575w	R 55	
(44)		F Pipe	4	→ Cool	Source 4 36deg 575w	R 55	
(45)		E Pipe	6	→ Cool	Source 4 36deg 575w	R 55	
(46)		F Pipe	6	→ Cool	Source 4 36deg 575w	R 55	
(47)		E Pipe	8	→ Cool	Source 4 36deg 575w	R 55	
(48)		F Pipe	8	→ Cool	Source 4 36deg 575w	R 55	
(49)		Floor mount	1	Fairy shins	Source 4 50deg 575w	R 37	
(50)		Floor mount	2	Fairy shins	Source 4 50deg 575w	R 37	
(51)		5 Elec	1	Back light	S4 PAR WFL 575w	R 356	
(52)		5 Elec	3	Back light	S4 PAR WFL 575w	R 356	
(53)		5 Elec	5	Back light	S4 PAR WFL 575w	R 356	
(54)		7 Elec	1	Back light	S4 PAR WFL 575w	R 356	
(55)		7 Elec	2	Back light	S4 PAR WFL 575w	R 356	
(56)		7 Elec	3	Back light	S4 PAR WFL 575w	R 356	
(57)		B Pipe	9	Back diagonals	PAR 64 WFL 1kw	R 82	
(58)		B Pipe	10	Back diagonals	PAR 64 WFL 1kw	R 82	
(59)		E Pipe	9	Cupcake drop	PAR 64 WFL 1kw	R 82	
(60)		E Pipe	10	Cupcake drop	PAR 64 WFL 1kw	R 82	
(61)		A Pipe	9	Back drop pinks	PAR 64 WFL 1kw	R 344	
(62)		F Pipe	9	Back drop pinks	PAR 64 WFL 1kw	R 344	
(63)		2 Elec	1	Fairy tops	S4 PAR WFL 575w	R 358	
(64)		2 Elec	2	Fairy tops	S4 PAR WFL 575w	R 358	

Christina Watanabe / Lightwright 5

(34) thru (64)

Pink Tour.lw5

CHANNEL HOOKUP

Pink Tour.lw5

3/26/10

Chan	Dm	Position	U#	Purpose	Type & Acc & W	Color	Gobo
(65)		2 Elec	3	Fairy tops	S4 PAR WFL 575w	R 358	
(66)		SL Box Boom	1	Front fills	Source 4 50deg 575w	R 33	
(67)		SL Box Boom	2	Front fills	Source 4 50deg 575w	R 33	
(68)		SR Box Boom	1	Front fills	Source 4 50deg 575w	R 33	
(69)		SR Box Boom	2	Front fills	Source 4 50deg 575w	R 33	
(70)		FOH 2	1	Window gobo	Source 4 50deg 575w	NC	Window

Christina Watanabe / Lightwright 5

(65) thru (70)

Pink Tour.lw5 INSTRUMENT SCHEDULE

Pink Tour.lw5

3/26/10

Floor mount

U#	Purpose	Type & Acc & W	Ckt	C#	Color	Gobo	Gsiz	D	Chan
1	Fairy shins	Source 4 50deg 575w			R 37				(49)
2	Fairy shins	Source 4 50deg 575w			R 37				(50)

7 Elec

U#	Purpose	Type & Acc & W	Ckt	C#	Color	Gobo	Gsiz	D	Chan
1	Back light	S4 PAR WFL 575w			R 356				(54)
2	Back light	S4 PAR WFL 575w			R 356				(55)
3	Back light	S4 PAR WFL 575w			R 356				(56)

5 Elec

U#	Purpose	Type & Acc & W	Ckt	C#	Color	Gobo	Gsiz	D	Chan
1	Back light	S4 PAR WFL 575w			R 356				(51)
2	Top light	6" Fres 750w			L 202				(9)
3	Back light	S4 PAR WFL 575w			R 356				(52)
4	Top light	6" Fres 750w			L 202				(10)
5	Back light	S4 PAR WFL 575w			R 356				(53)

3 Elec

U#	Purpose	Type & Acc & W	Ckt	C#	Color	Gobo	Gsiz	D	Chan
1	Top light	6" Fres 750w			L 202				(7)
2	Top light	6" Fres 750w			L 202				(8)

2 Elec

U#	Purpose	Type & Acc & W	Ckt	C#	Color	Gobo	Gsiz	D	Chan
1	Fairy tops	S4 PAR WFL 575w			R 358				(63)
2	Fairy tops	S4 PAR WFL 575w			R 358				(64)
3	Fairy tops	S4 PAR WFL 575w			R 358				(65)

1 Elec

U#	Purpose	Type & Acc & W	Ckt	C#	Color	Gobo	Gsiz	D	Chan
1	Front light	Source 4 38deg 575w			R 05				(4)
2	Front light	Source 4 38deg 575w			R 05				(5)
3	Front light	Source 4 38deg 575w			R 05				(6)

Christina Watanabe / Lightwright 5

Floor mount thru 1 Elec

Pink Tour.lw5 INSTRUMENT SCHEDULE

Pink Tour.lw5

3/26/10

FOH 2

U#	Purpose	Type & Acc & W	Ckt	C#	Color	Gobo	Gsiz	D	Chan
1	Window gobo	Source 4 50deg 575w			NC	Window			(70)
2	Front light	Source 4 36deg 575w			R 05				(1)
3	Front light	Source 4 36deg 575w			R 05				(2)
4	Front light	Source 4 36deg 575w			R 05				(3)

F Pipe

U#	Purpose	Type & Acc & W	Ckt	C#	Color	Gobo	Gsiz	D	Chan
1	→ Warm	Source 4 36deg 575w			R 99				(22)
2	→ Cool	Source 4 36deg 575w			R 55				(42)
3	→ Warm	Source 4 36deg 575w			R 99				(24)
4	→ Cool	Source 4 36deg 575w			R 55				(44)
5	→ Warm	Source 4 36deg 575w			R 99				(26)
6	→ Cool	Source 4 36deg 575w			R 55				(46)
7	→ Warm	Source 4 36deg 575w			R 99				(28)
8	→ Cool	Source 4 36deg 575w			R 55				(48)
9	Back drop pinks	PAR 64 WFL 1kw			R 344				(62)

B Pipe

U#	Purpose	Type & Acc & W	Ckt	C#	Color	Gobo	Gsiz	D	Chan
1	← Warm	Source 4 36deg 575w			R 99				(12)
2	← Cool	Source 4 36deg 575w			R 55				(32)
3	← Warm	Source 4 36deg 575w			R 99				(14)
4	← Cool	Source 4 36deg 575w			R 55				(34)
5	← Warm	Source 4 36deg 575w			R 99				(16)
6	← Cool	Source 4 36deg 575w			R 55				(36)
7	← Warm	Source 4 36deg 575w			R 99				(18)
8	← Cool	Source 4 36deg 575w			R 55				(38)
9	Back diagonals	PAR 64 WFL 1kw			R 82				(57)
10	Back diagonals	PAR 64 WFL 1kw			R 82				(58)

Christina Watanabe / Lightwright 5

FOH 2 thru B Pipe

Pink Tour.lw5

INSTRUMENT SCHEDULE

Pink Tour.lw5

3/26/10

A Pipe

U#	Purpose	Type & Acc & W	Ckt	C#	Color	Gobo	Gsiz	D	Chan
1	← Warm	Source 4 36deg 575w			R 99				(11)
2	← Cool	Source 4 36deg 575w			R 55				(31)
3	← Warm	Source 4 36deg 575w			R 99				(13)
4	← Cool	Source 4 36deg 575w			R 55				(33)
5	← Warm	Source 4 36deg 575w			R 99				(15)
6	← Cool	Source 4 36deg 575w			R 55				(35)
7	← Warm	Source 4 36deg 575w			R 99				(17)
8	← Cool	Source 4 36deg 575w			R 55				(37)
9	Back drop pinks	PAR 64 WFL 1kw			R 344				(61)

E Pipe

U#	Purpose	Type & Acc & W	Ckt	C#	Color	Gobo	Gsiz	D	Chan
1	→ Warm	Source 4 36deg 575w			R 99				(21)
2	→ Cool	Source 4 36deg 575w			R 55				(41)
3	→ Warm	Source 4 36deg 575w			R 99				(23)
4	→ Cool	Source 4 36deg 575w			R 55				(43)
5	→ Warm	Source 4 36deg 575w			R 99				(25)
6	→ Cool	Source 4 36deg 575w			R 55				(45)
7	→ Warm	Source 4 36deg 575w			R 99				(27)
8	→ Cool	Source 4 36deg 575w			R 55				(47)
9	Cupcake drop	PAR 64 WFL 1kw			R 82				(59)
10	Cupcake drop	PAR 64 WFL 1kw			R 82				(60)

SL Box Boom

U#	Purpose	Type & Acc & W	Ckt	C#	Color	Gobo	Gsiz	D	Chan
1	Front fills	Source 4 50deg 575w			R 33				(66)
2	Front fills	Source 4 50deg 575w			R 33				(67)

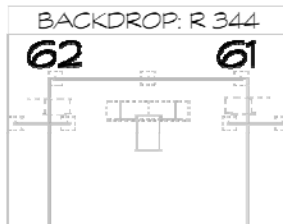
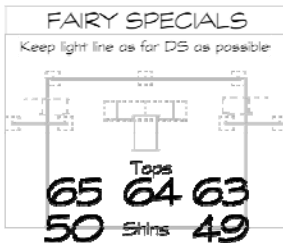
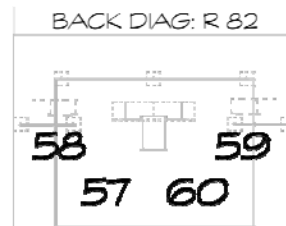
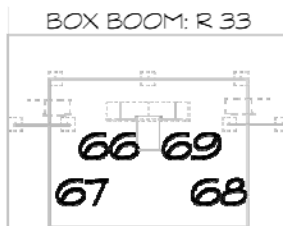
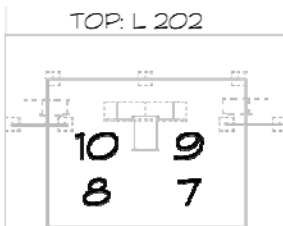
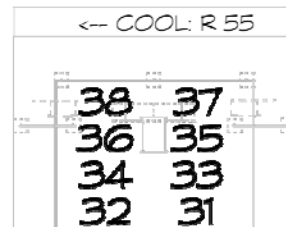
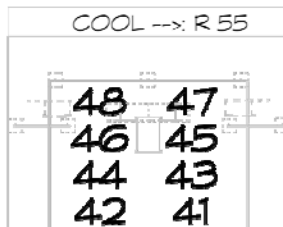
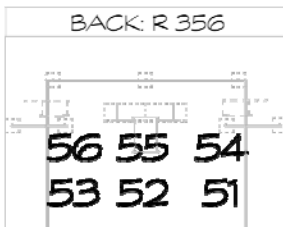
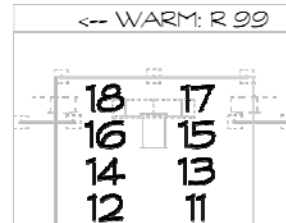
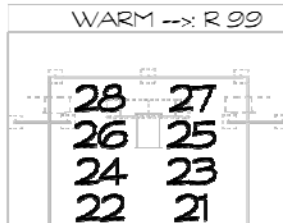
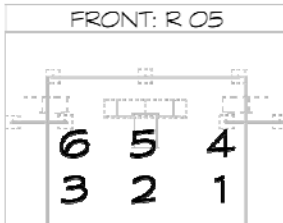
SR Box Boom

U#	Purpose	Type & Acc & W	Ckt	C#	Color	Gobo	Gsiz	D	Chan
1	Front fills	Source 4 50deg 575w			R 33				(68)
2	Front fills	Source 4 50deg 575w			R 33				(69)

Christina Watanabe / Lightwright 5

A Pipe thru SR Box Boom

Vital Theatre Company Presents:
Pinkalicious MAGIC SHEET
 Lighting Design: Christina Watanabe
 2010 tour



House lights: 100

Spring 2010

Pinkalicious TOUR
Lighting Cue Sheet

LD: Christina Watanabe
Dir: Teresa K. Pond

CUE	PAGE	TIME	LINE/ACTION	LOOK
3	-	2	Pre-show with house	Purple backlight glow, pink backdrop glow, house lights on
5	-	3	Curtain speech	Add center pool of light for speaker, house to half
7	-	3	End of curtain speech	Purple backlight just dim enough for actor's entrance, house lights out
10	4	0	2nd phrase of music bump	HOUSE look: front light, warm side light, purple back light, box booms to fill
12	13	12	PINK: Hi-ya, I'm going	NIGHT look: dim fronts, dim warm sides, blue back light, box booms to fill. Isolate bed.
14	14	2	Pink flicks her wand	Black out
16	14	1	Mom exits behind stage	Pink backdrop, stage in silhouette
18	14	2	Music crescendo	FAIRY look: shins, fairy tops
20	14	2	Fairy runs upstage	Black out
22	14	3	Bed is out	HOUSE look
24	17	0	Family arrives at Dr's office	DOC look: fronts, cool sides, cool tops, purple backs, box booms to fill
26	22	3	Family back on bicycle	OUTSIDE look: fronts, warm sides, blue tops, box booms to fill
28	32	3	PINK: But what's the link?	HOUSE look
30	41	3	Parents start to exit	NIGHT look
32	42	2	End of la la la	Black out
34	42	2	(Autofollow)	Pink backdrop, stage in silhouette
36	42	1	Bech sound	FAIRY look
38	42	2	Fairy runs upstage	Black out
40	42	3	Bed is out	HOUSE look
42	49	0	Thunder sound	Lightning flash
42.5	49	0	(Autofollow)	Lighting flash
43	49	1	(Autofollow)	House restore, but dimmer and cooler
44	49	0	PINK: What's happening to me?	Black out
46	49	5	Rooster sound	HOUSE look
48	55	3	DAD: And most of all	Isolate family, pink backdrop
50	55	0	Button	Black out
53	-	1	Curtain call	HOUSE look with pink backdrop
55	-	3	Birthday light	Add house lights at a glow
57	-	3	Post show	Purple backlight glow, pink backdrop glow, house lights on

www.vitaltheatre.org
www.starryeyedlighting.com

